

STUDIO SOHO: ROYALTY MEWS 22-25 DEAN ST W1D 3AR – Call 020 7437 3175

CENTRE RESOURCES: Reception-area, hallway-seating for up to 10, 2 fully wheelchair-accessible studios*. **New!** daylight studio with discreet separate entrance and en-suite, and meeting room. Free Wifi. All 3 studios air-conditioned. (Other facilities including serviced-hire, HD still/videocamera, blue-screen background, DV projector, hospitality etc by arrangement).



STUDIO 1* **70 sq m**

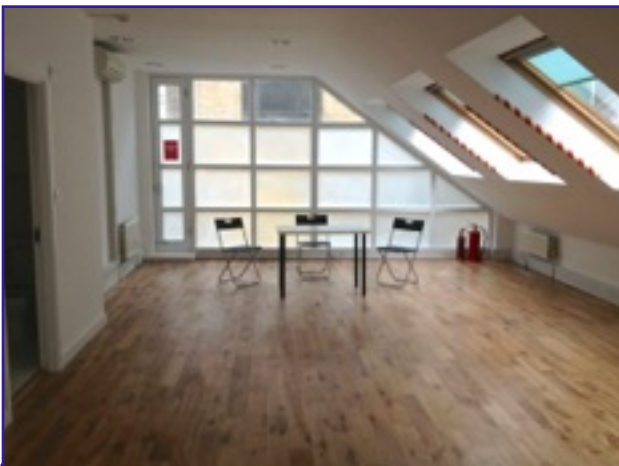
Approximately **9.25 x 8 metres**.
Ceiling height **2.4 / 2.04 m** under beam.
(here shown in 4-side set-up) Including:

- Sound system inc MP3 dock
- Flexible seating for up to 50

STUDIO 2* **57 sq m**

Approximately **9 x 6.4 metres**.
Ceiling height **2.4 m** (here shown without furniture) Including:

- Lirika upright piano
- Flexible seating for up to 40
- 3-seat Ikea sofa
- BOSE MP3 Docking Station



NEW! STUDIO @No.8 **38 sq m plus**

Minimum **9 x 4 metres**, plus 1.6 m width under angled ceiling, height **3 – 1.5 m**
Including:

- Discreet separate entrance
- Transposing keyboard & MP3 Dock
- Flexible seating for up to 30
- Kitchenette, ensuite shower-room

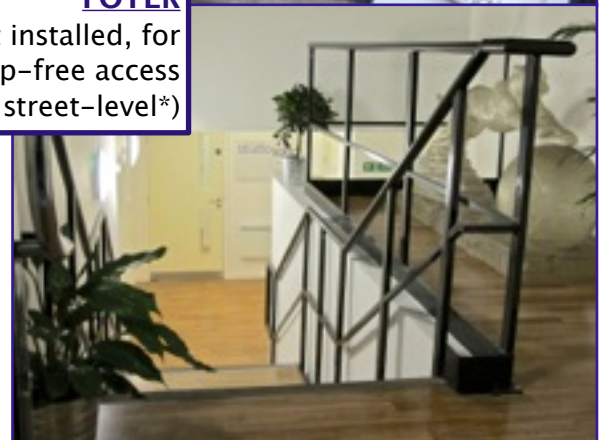
MEETING-ROOM @No.8 **24 sq m**

Minimum **6 x 4 metres**, height **2.3 m**
• Flexible seating for up to 20



MAIN ENTRANCE & FOYER

(stairlift installed, for step-free access from street-level*)



For fully-staffed reception facilities – including processing of clients, hospitality, ident – photography and DV-camera operation, photocopying, uploading etc – please enquire.

STUDIO SOHO

Based in a mews off Dean Street – just 2 doors along from the Soho Theatre, between Quo Vadis and Soho Joe restaurants, in the heart of the Theatre and Media industries.

We now have 3 bright, modern air-conditioned studios available for rehearsals, castings, workshops and training sessions, plus 2 quiet rooms for meetings etc.

The CENTRE offers:

- Pleasant foyer and Reception area
- 11 steps to access main Foyer, but then step-free*
- Totally step-free access via stairlift* to main Studio
- 10 minutes get-in / get out time per booking
- Discreet separate entrance to @No.8 facilities
- Oak-laminate wood flooring to all Studios
- Fully-accessible toilet/wet-room
- Waiting-space for 10 – 15 people
- 3 air-conditioned studios
- Free wi-fi
- **Bookable facilities, by prior arrangement:**
- Serviced hire available
- Hot/cold drinks dispensers, light catering for events
- Use of Kitchen for beverages, Microwave etc
- Use of chill-out table-area in main Studio
- Full-length mirror, use of items of furniture
- HD still/videocamera, tripod. Blue-screen backdrop
- Power/stage lighting, black curtain tabs
- 22" TV, Epson DV projection
- Use of Whiteboard / Flipchart
- Photocopying, Data uploads
- 20 yoga mats for movement work
- Use of Changing Room with showers

*STUDIO 1: 70 sq m

Approx 9.25 x 8 m, height 2.4 / 2.04 m

- Power sound-system inc CD player, MP3 dock
- Flexible seating for up to 50
- Movement-space for 14

*STUDIO 2: 57 sq m

Approx 9 x 6 m, height 2.4 m

- Upright piano
- 3-seater sofa
- BOSE MP3 Dock
- Flexible seating for up to 40

STUDIO @No.8: at least 38 sq m

Approx 9 x 4 m, plus 1.6 m width under angled ceiling, height 3 – 1.5 m. Second floor: access via stairs.

- Transposing keyboard
- MP3 dock
- Flexible seating for up to 30

*LIBRARY: 16 sq m / MEETING ROOM @No.8: 24 sq m

Approx 4 x 4 m* / 6 x 4 m, height 2.4* / 2.3 m, first floor.

- Flexible seating for up to 15 / 20
- Available for script-reads and meetings
- Bookable as waiting-area for castings

